

The logo for Wold Architects and Engineers, featuring the word "Wold" in white text on an orange, irregularly shaped background.

Wold

A wide-angle photograph of a school gymnasium. The floor is polished wood with red and black court lines. In the background, there is a stage with red curtains and a large white projection screen. An American flag is visible on the left wall, and a "We Say NO DRUGS NO WAY" sign is on the right. Basketball hoops are mounted on the walls. The ceiling has exposed wooden beams and track lighting.

NORRIDGE SD 80

WOLD ARCHITECTS AND ENGINEERS | BOARD OF EDUCATION December 16, 2025



FACILITIES CONDITIONS ASSESSMENTS

PROCESS AND DATA



FACILITIES CONDITIONS ASSESSMENT

Pavement
Exterior Masonry
Roofs
Interior Finishes
ADA
Life Safety Remaining
Mechanical
Electrical
Plumbing

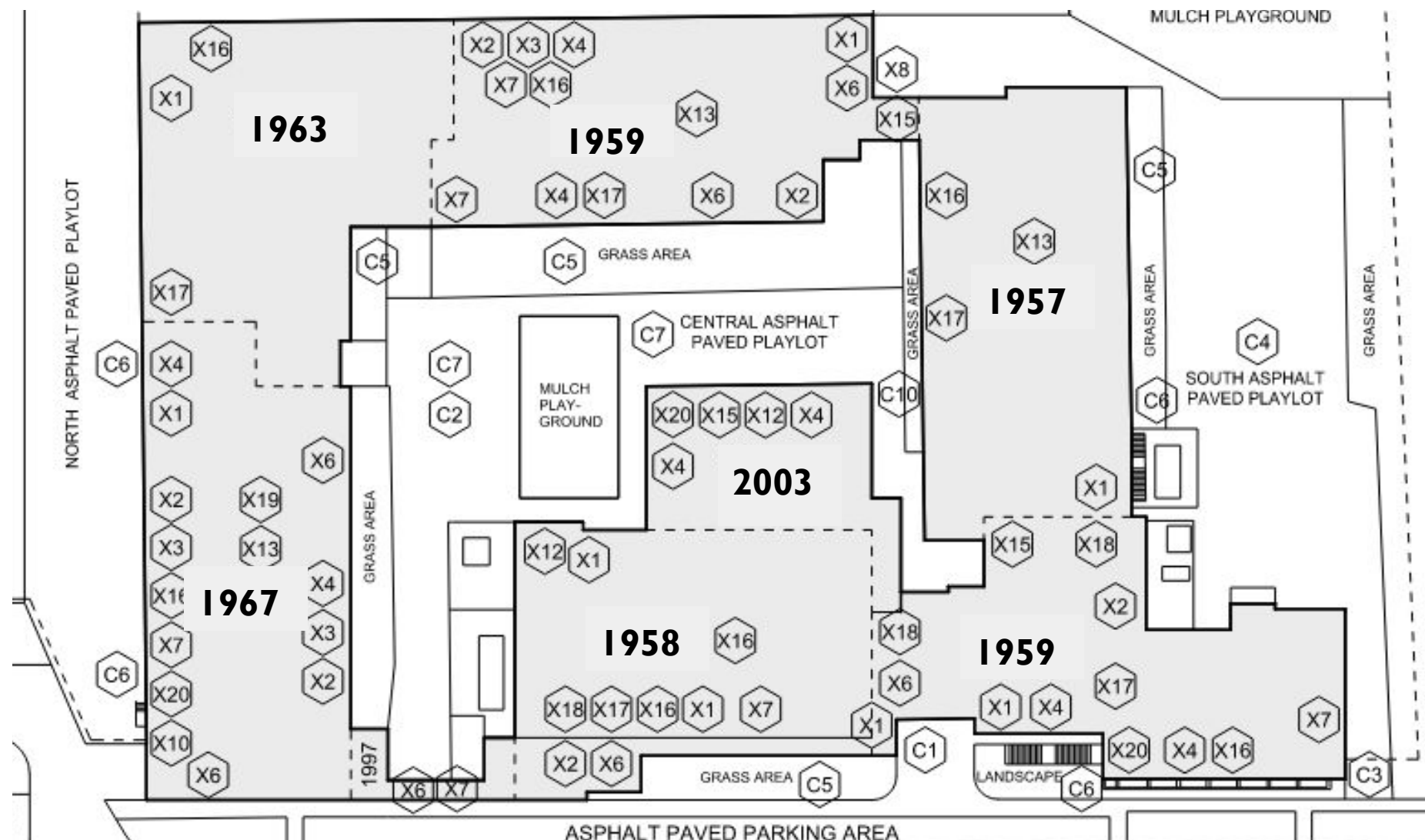




FACILITIES CONDITIONS ASSESSMENTS

Leigh Elementary School

**Leigh
Elementary
School - Age
58-67 years**





FACILITIES CONDITIONS ASSESSMENTS

SUMMARY

Leigh Elementary School:

- Classroom Improvements:
- Floor, doors, ceilings, hooks, cabinets, shelves
- ADA access to classroom doors





FACILITIES CONDITIONS ASSESSMENTS

SUMMARY

Leigh Elementary School:

- Toilets





FACILITIES CONDITIONS ASSESSMENTS

SUMMARY

Leigh Elementary School:

- Gym (floor, ceiling, bleachers, block walls)





FACILITIES CONDITIONS ASSESSMENTS

SUMMARY

Leigh Elementary School:

- LMC Remodel



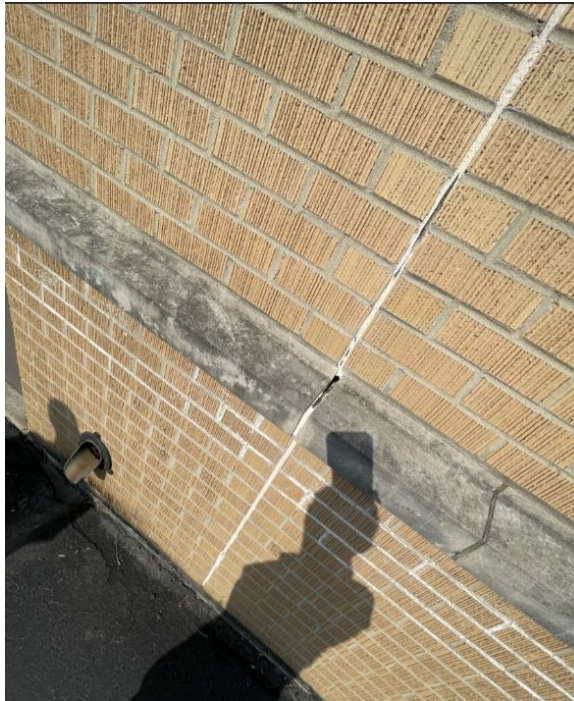


FACILITIES CONDITIONS ASSESSMENTS

SUMMARY

Leigh Elementary School:

- Tuckpointing, Stone Clean
- Joint Sealant



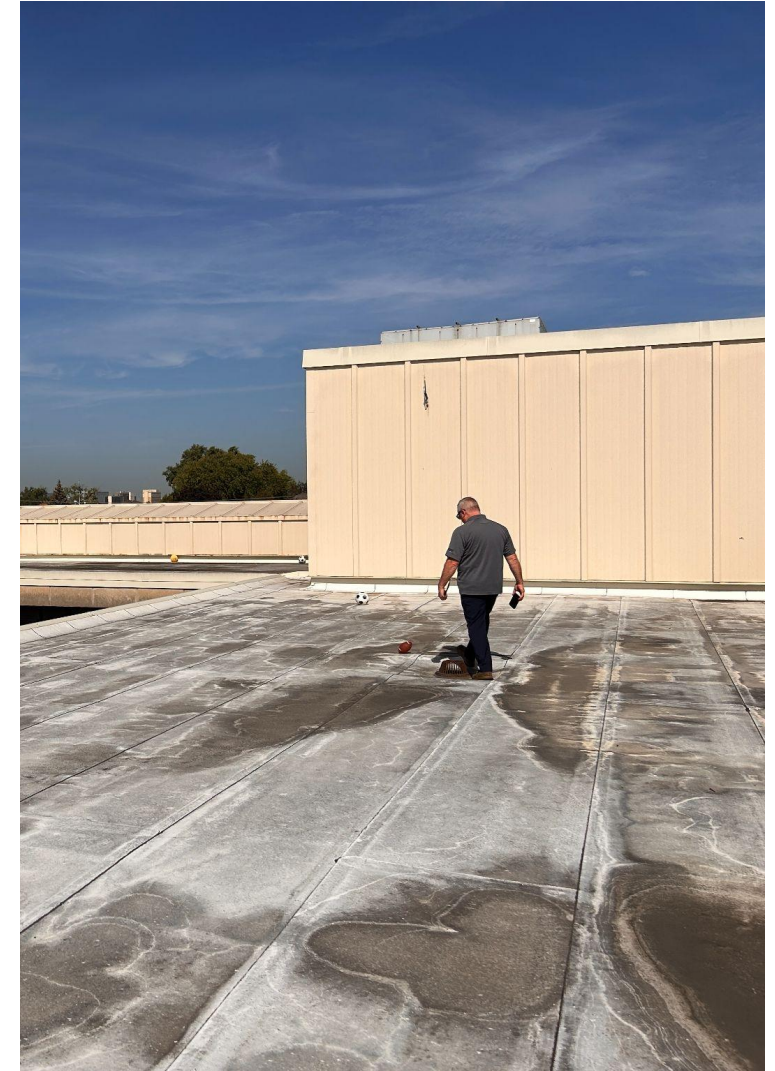


FACILITIES CONDITIONS ASSESSMENTS

SUMMARY

Leigh Elementary School:

- Replace rubber roofing and provide overflows
- Rusted metal roof





FACILITIES CONDITIONS ASSESSMENTS

SUMMARY

Leigh Elementary School:

- Courtyard, Playground



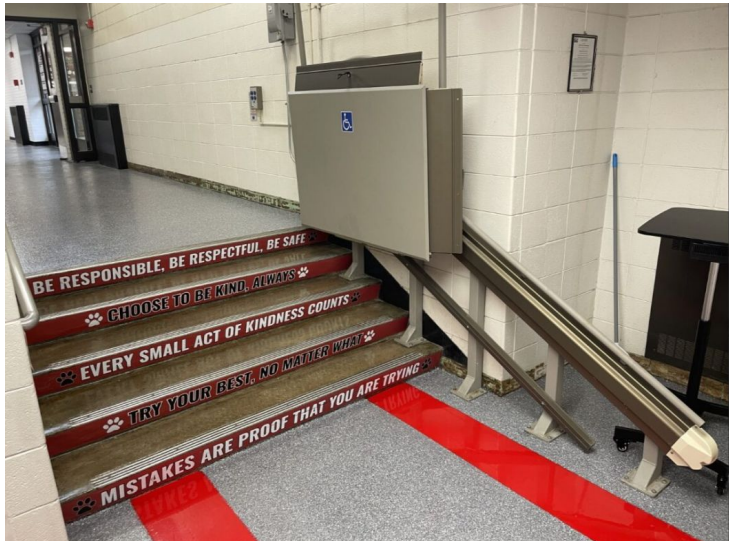


FACILITIES CONDITIONS ASSESSMENTS

SUMMARY

Leigh Elementary School:

- ADA Ramp at Door 7
- Addition to link 2 sides of building and add elevator to be ADA accessible





FACILITIES CONDITIONS ASSESSMENTS

SUMMARY

Leigh Elementary:

Mechanical, Electrical, and Plumbing

- Electrical Panels
- Electrical Switch Boards
- Toilet Exhaust
- Replace Air Handlers and Pumps
- Replace Sink Mixing Valves
- Replace Sewer Pumps



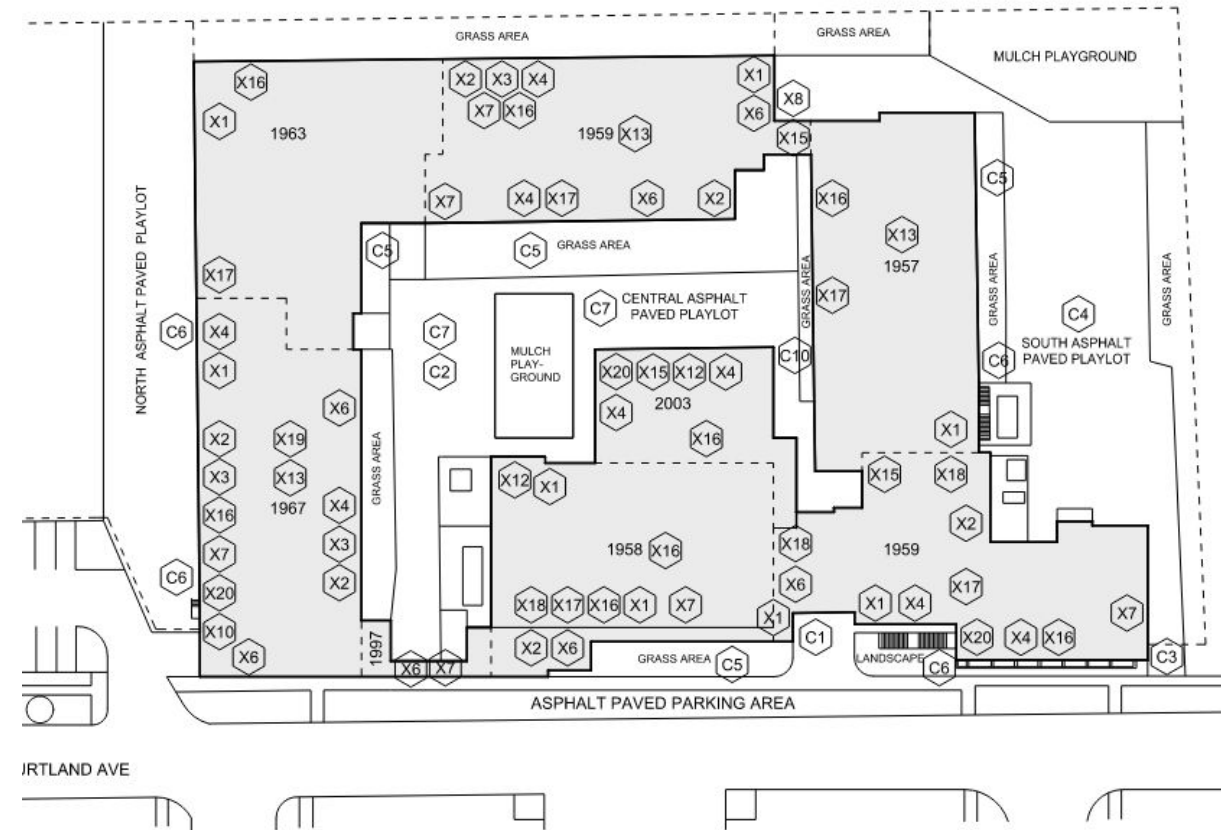


Leigh Elementary School - COST SUMMARY

Leigh Elementary School - Cost Estimates Scope:

- 1- 5 year = \$6.2M
- 6-10 year = \$5.5M
- Total = \$11.7M - includes escalation

Includes Life Safety List 2020 - Remaining = \$27K
Scope Life Safety Eligible - potentially and upon ISBE
Approval = \$6M Approx.

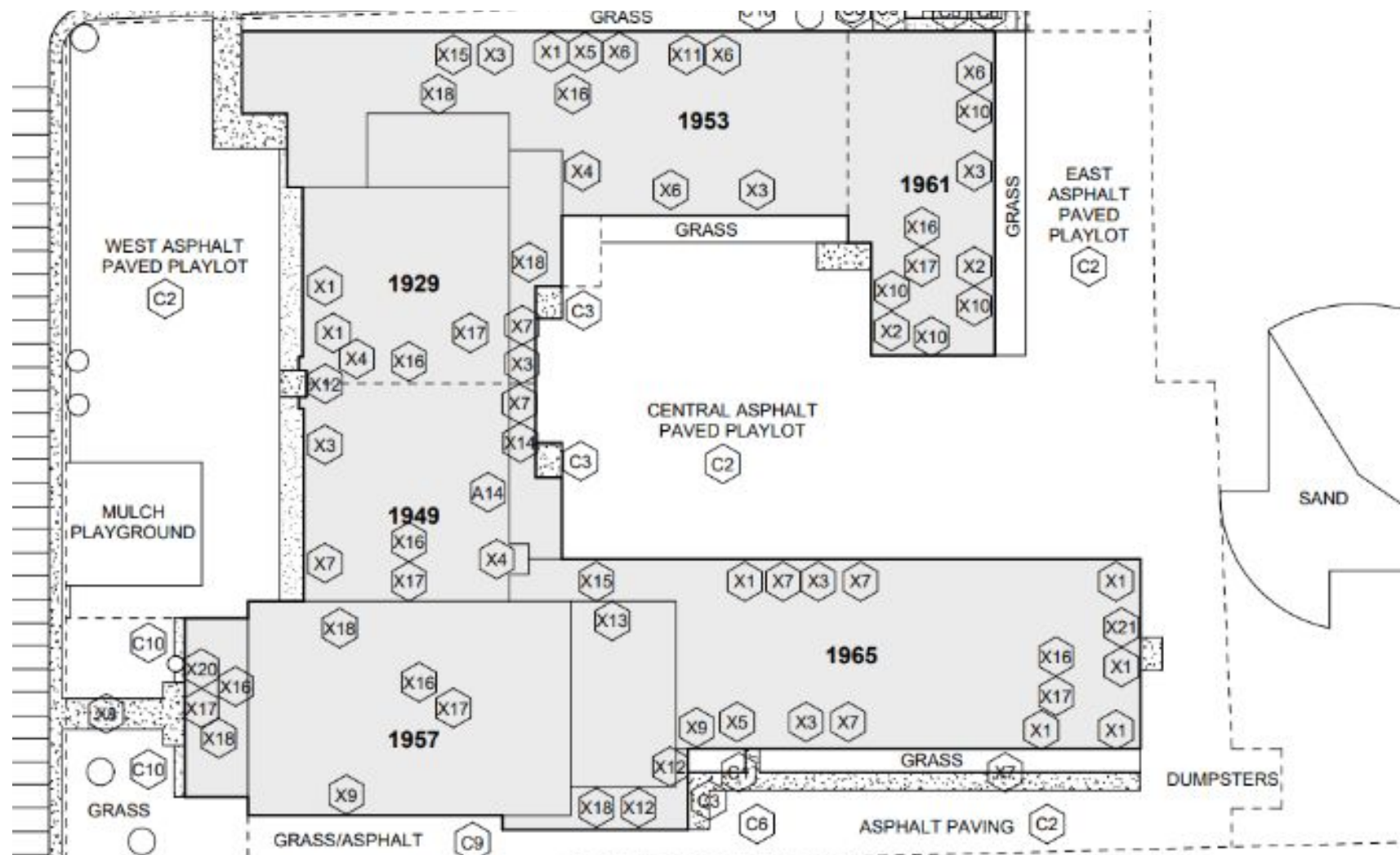




FACILITIES CONDITIONS ASSESSMENTS

GILES SCHOOL - COST SUMMARY

**Giles School -
Age to 60-76**





FACILITIES CONDITIONS ASSESSMENTS

SUMMARY

Giles School:

- Classroom Improvements:
- floor, doors, ceilings, lockers, sinks, cabinets, shelves





FACILITIES CONDITIONS ASSESSMENTS

SUMMARY

Giles School:

- Corridor with wood ceiling
- Flooring, Paint





Giles School:

- Toilets





FACILITIES CONDITIONS ASSESSMENTS

SUMMARY

Giles School:

- Gym (stage, bleachers)





FACILITIES CONDITIONS ASSESSMENTS

SUMMARY

Giles School:

- Cafeteria





FACILITIES CONDITIONS ASSESSMENTS

SUMMARY

Giles School:

- Replace roofing and provide overflows





FACILITIES CONDITIONS ASSESSMENTS

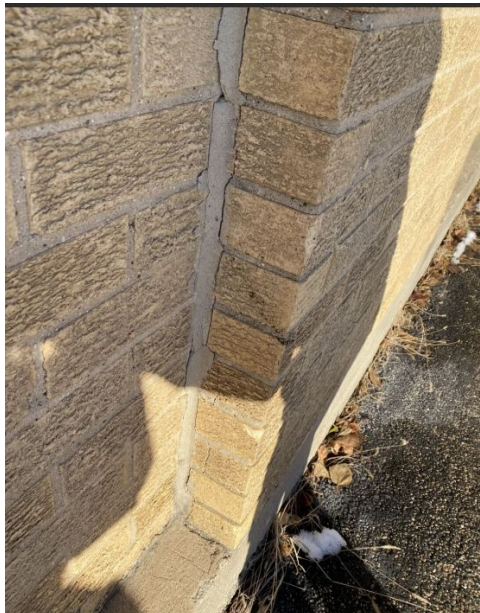
SUMMARY

Giles School:

- Tuckpointing, Brick Repairs and Joint and Window Caulk

-See Summer 2026 Scope

-Future tuckpointing work planned





FACILITIES CONDITIONS ASSESSMENTS

SUMMARY

Giles School:

- Asphalt and Playgrounds





FACILITIES CONDITIONS ASSESSMENTS

SUMMARY

Giles School:

Mechanical Electrical and Plumbing

- Electrical Branch Panels
- LED Lighting
- Toilet Exhaust
- Replace Air Handlers and Pumps
- Replace Sink Mixing Valves
- Replace Sewer Pumps
- Replace Water Heater



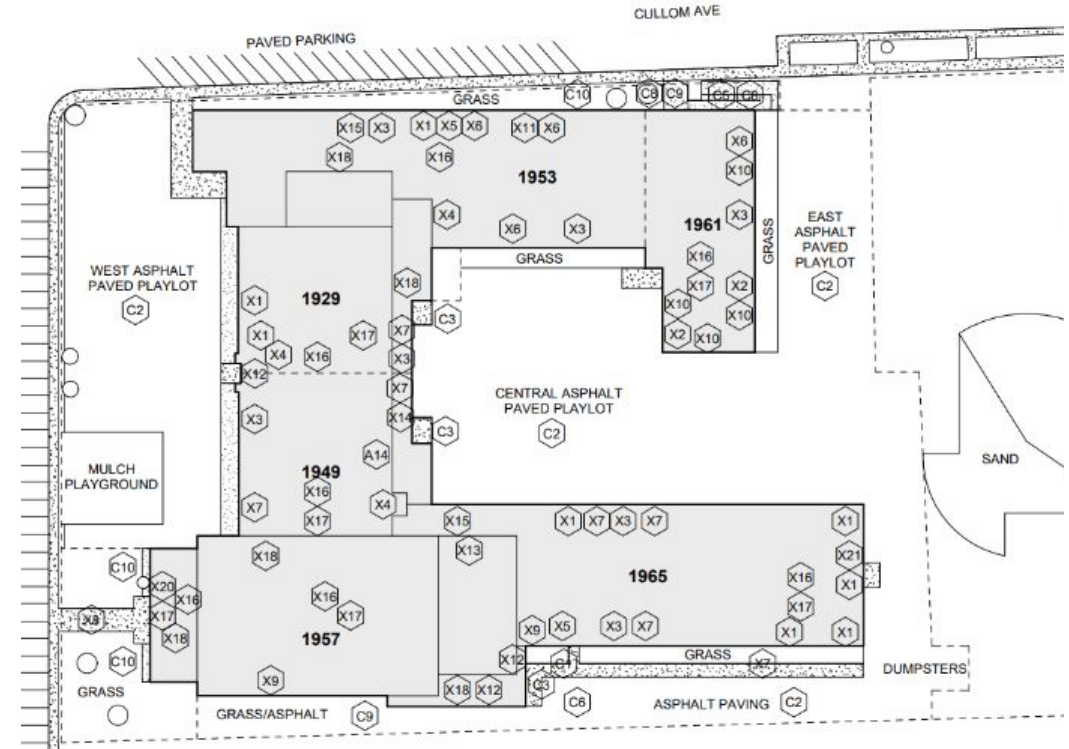


FACILITIES CONDITIONS ASSESSMENTS GILES SCHOOL - COST SUMMARY

Giles School - Cost Estimate Scope:

- 1- 5 year = \$3.4M
- 6-10 year = \$5.6M
- Total = \$9.0M - includes escalation

Includes Life Safety List 2020 - Remaining = \$204K
Scope Life Safety Eligible - potentially and upon ISBE
Approval = \$6.8M Approx.





Giles School - Summer 2026 Masonry and Tuckpointing

Budget Scope costs = \$283K

- At 1949 Wing - Repair and Rebuild brick walls and lintels. Tuckpoint Portions in-need



Parapet brick repair



Tuckpointing



Lintel Repair and Brick Replacement



SUMMER 2026 PROJECTS

Giles School - Summer 2026 Masonry and Tuckpointing

- And at 1961 East wing - Repair and rebuild overhanging brick and stone. Replace damaged bricks



Stone Repair



Brick Repair and Tuckpointing



Overhang Area of Tuckpointing



FACILITIES CONDITIONS ASSESSMENTS

NEXT STEPS

Next Steps:

- 10-year Long Range Facilities Plan Funding review. Align annual funding to priorities
- If needed, submit Life Safety Amendments for Life Safety Bonds
- Plan and Budget for higher priority projects for Summer 2027 and 2028

Questions?

