

If we collect 200 pounds of plastic bottle CAPS,
we can buy a four-foot, multi-colored Buddy Bench for \$180.



From
Bottle
Caps → To
Buddy
Bench



BOTTLE CAPS UPDATE!

CONGRATULATIONS Leigh Tigers! We reached our GOAL!!!

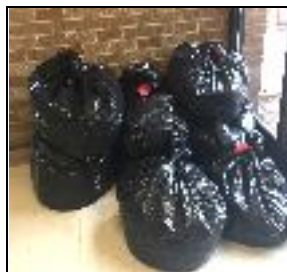
We will order our first, recycled **Buddy Bench** made entirely
by the **Plastic Bottle Caps** WE have been collecting!

Student Council will donate \$180 made from the Valentine Grams Fundraiser.

Stay tuned for more information on a second buddy bench!

Your time & green habits will be appreciated by many, for years to come!

<u>Weigh-In #1</u> Twelve bags $8+8+10+10+10+12$ $+15+15+15+15+15+20$ =153 pounds of bottle caps	<u>Weigh-In #2</u> Eight bags $15+15+15+15+15$ $+20+30+35$ =160 pounds of bottle caps	<u>Weigh-In #3</u> Six bags $20+20+20+20+20$ $+25$ =125 pounds of bottle caps
--	---	---



Total = 438 pounds of caps



Happy Summer!

If you have any questions, pkaranikolas@norridge80.net

